

# The Arc<sup>®</sup> of Whatcom County



## Dan Godwin Community Center Circles of Support



# The Arc of Whatcom County

ADVOCATING FOR THE RIGHTS OF CITIZENS WITH DEVELOPMENTAL DISABILITIES  
1111 CORNWALL AVE. #205, BELLINGHAM WA 98225  
PHONE/FAX: (360)715-0170/715-8522 E-MAIL: [arc2@nas.com](mailto:arc2@nas.com) WEB: [WWW.ARCWHATCOM.ORG](http://WWW.ARCWHATCOM.ORG)

## The Arc of Whatcom County Dan Godwin Community Center

### Board of Directors

Emily Kahlstrom,  
M.D.  
*President*

Lisa Rolston  
*Co-Vice President*

Susan Larson  
*Co-Vice President*

Marilyn Miller  
*Treasurer*

Marguerite Ryan  
*Secretary*

Stephen Johnson  
*Past President*

Kristina Hoffman

Jan Carlson

Michele Hill

Marilyn Korver

Maureen Godwin

### Affiliations:

The Arc of the U.S.

The Arc of Washington State

United Way of Whatcom County

*Advocating for people with developmental disabilities in Whatcom, Skagit and Island County*

A 501(C)3 Organization  
{Federal Tax ID #311579359}

The Arc of Whatcom County is pleased to announce our new future home at 2602 McLeod Road in Bellingham, WA.

Our new home named, The Dan Godwin Community Center, will be a family-centered place where community members of all ages and abilities can gather to share resources and participate in recreational and educational activities. The Dan Godwin Community Center especially welcomes community members with developmental disabilities who have completed school and want to continue interacting with others. This is a place to enjoy family-friendly activities and to appreciate diversity within our community.

The home has been donated to The Arc of Whatcom County by the Godwin Family Foundation and our capital campaign is underway to fund the extensive renovations needed.

The mission of The Arc of Whatcom County is to improve the quality of life, increase the independence and assure the full inclusion in the community of all persons with developmental disabilities.

The vision is to be an effective resource, a strong advocate, and a dedicated base of support for community members with developmental disabilities and their families.

The philosophy of The Arc of Whatcom County for providing services to individuals and families is based on the principles of self-determination.

- People with developmental disabilities and their families want services and supports delivered by a system that allows them choice and control over their lives.
- People with developmental disabilities are equal citizens, people first, and the disability is secondary.
- People with developmental disabilities have needs, wants and dreams like everyone else. With respectful support, information and advocacy, these needs can be met and dreams achieved.

If you are interested in becoming involved in The Arc's Dan Godwin Community Center, the following are possible ways to support us:

- Offer an in-kind donation of your products or services
- Become a sponsor of the community center
- Provide a monetary donation to fund programs and services

I look forward to speaking with you about sponsorship opportunities with The Arc's Dan Godwin Community Center

Sincerely,

*Susan Jewell*  
Executive Director



## Dan Godwin

Daniel Aaron Godwin was a young man who for 20 years required 24 hour care and numerous medical interventions to survive daily life. He taught those around him the real meaning of "living in the now ". His actions were always direct, sincere and without hesitation. He loved to spend time in the presence of others. He never met a stranger. We will remember Daniel for touching so many lives and the lessons he taught us.

As a toddler he had the wonderful honor of being a poster child for the March of Dimes and was responsible for raising awareness about the need for medical research.

His fun loving spirit always shined through his many life challenges. If he discovered that something he did was considered humorous, he would repeat it with great expectation on his face. He loved laughter.

He demonstrated child-like unconditional love and concern. One of his most spontaneous sentences was "Are you OK?" He gave huge unsolicited hugs to anyone who appeared to have a weakened spirit.

We were never able to teach him to tell a stranger his full name, address or age. Instead he taught us there should be no strangers, and knowing name, address or age is not as important as knowing: Are you OK? Do you need the warmth of another's arms wrapped around you?

Instead of us teaching him the many skills needed to live a more independent life, he taught us much about the skill of interdependent living.

As a young adult and in his passing, he is being honored by raising community awareness about the need for social opportunities for people with developmental disabilities and the need for a place where people of all ages and abilities can come together, have fun and never meet a stranger.

Daniel's legacy of valuing every individual's spirit of hope, compassion and joy lives on.

The Godwin Family

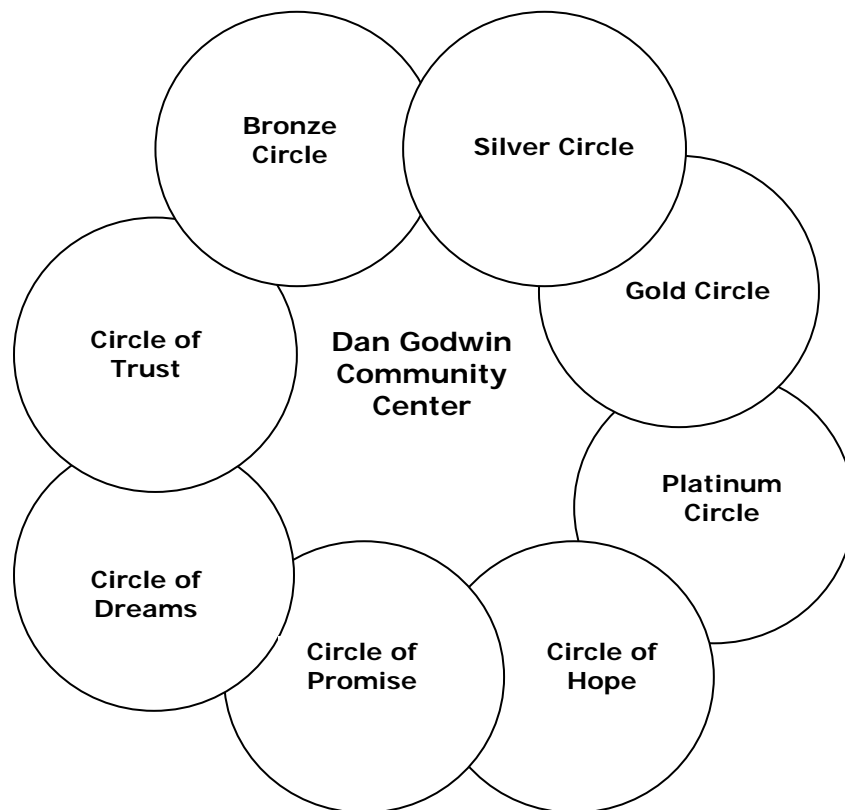
# Circles of Support

## Sponsor Benefits

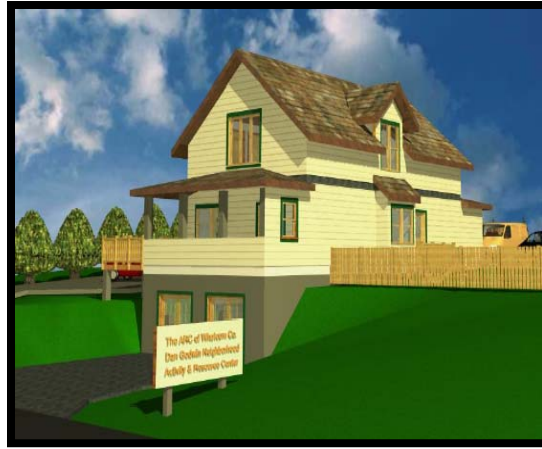
The most important benefit of sponsorship is the satisfaction of realizing that your financial contribution is improving the lives of persons with developmental disabilities in our local communities. Contributions include cash donations and/or 'gift in kind'.

In addition, there are a number of tangible benefits available for all community members, regardless of ability or age, and based upon their involvement.

## Sponsorship Levels



Circle of Dreams	\$10,000-\$100,000	Platinum Circle	\$750-\$1,499
Circle of Promise	\$5,000-\$9,999	Gold Circle	\$250-\$749
Circle of Hope	\$3,000-\$4,999	Silver Circle	\$50-\$249
Circle of Trust	\$1,500-\$2,999	Bronze Circle	\$10-\$49



**Dan Godwin Community Center  
Circle of Dreams Sponsor  
\$10,000-\$100,000**

A Dan Godwin Community Center Circle of Dreams sponsor will support the realization of full community inclusion for over 150,000 local community members.

*A gift at this level provides:*

**Corporate Advertising and Promotional Materials**

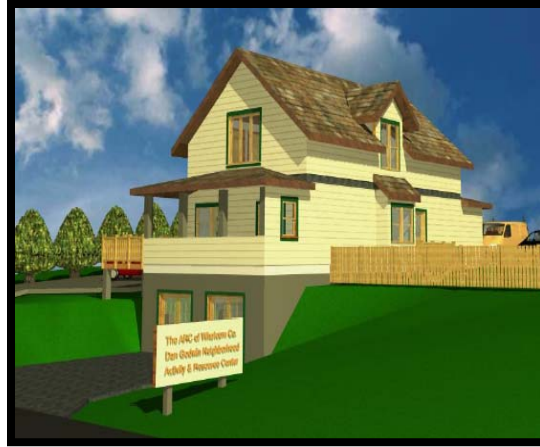
- Sponsor identification will appear in all print advertising for The Dan Godwin Community Center.
- Corporate recognition on all The Dan Godwin Community Center promotional materials, media and event materials.
- Special event publicity.
- Sponsor identification on all t-shirts.

**On-Site Signage and Recognition**

- Sponsor recognition will appear on The Dan Godwin Community Center sponsor signs. In addition, sponsor- provided signage may be displayed. Sponsors will be allowed to setup informational exhibits at events.
- Sponsors will be recognized at the Annual Membership Dinner Banquet from the podium and any sponsor representatives will be introduced.
- Sponsors will be recognized with a permanent display plaque on site.
- Sponsors will have complete access to services, the Community Center and monthly Arc newsletters.

**Terms**

- Contribute a minimum of \$10,000 cash for the benefit of local education, recreation and advocacy programs, or towards Community Center renovations.
- Or arrange \$10,000 in contributions/in-kind donations or materials.



**The Dan Godwin Community Center  
Circle of Promise Sponsor  
\$5,000-\$9,999**

A Dan Godwin Community Center Circle of Promise Sponsor circle will facilitate increased supports for 100 social service organizations serving community members with developmental disabilities.

*A gift at this level provides:*

**Corporate Advertising and Promotional Materials**

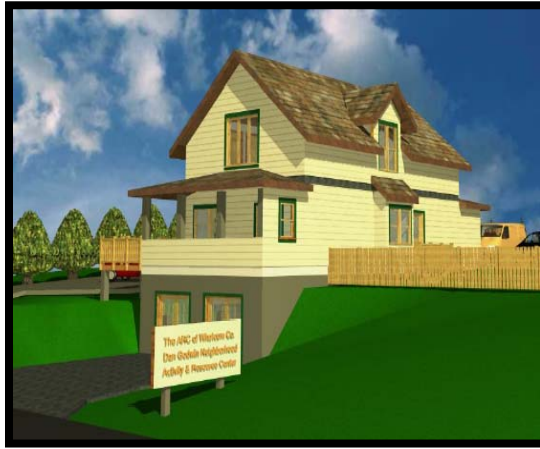
- Sponsor identification will appear in all print advertising for The Dan Godwin Community Center.
- Corporate recognition on all The Dan Godwin Community Center promotional materials, media and event materials.
- Special event publicity.
- Sponsor identification on all t-shirts.

**On-Site Signage and Recognition**

- Sponsor recognition will appear on The Dan Godwin Community Center sponsor signs. In addition, sponsor- provided signage may be displayed. Sponsors will be allowed to setup informational exhibits at events.
- Sponsors will be recognized at the Annual Membership Dinner Banquet from the podium and any sponsor representatives will be introduced.
- Sponsors will be recognized with a permanent display plaque on site.
- Sponsors will have complete access to services, the Community Center and monthly Arc newsletters.

**Terms**

- Contribute a minimum of \$5,000 cash for the benefit of local education, recreation and advocacy programs, or towards Community Center renovations.
- Or arrange \$5,000 in contributions/in-kind donations or materials.



**The Dan Godwin Community Center  
Circle of Hope Sponsor  
\$2,500-\$4,999**

A Dan Godwin Community Center Circle of Hope Sponsor will allow greater physical access to 1,200 local businesses and community organizations.

*A gift at this level provides:*

**Corporate Advertising and Promotional Materials**

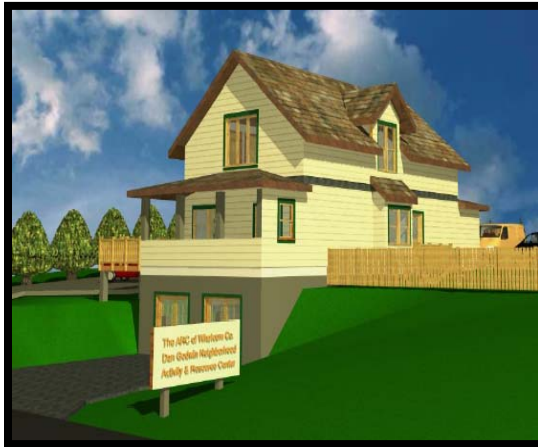
- Sponsor identification will appear in select print advertising for The Dan Godwin Community Center.
- Corporate recognition on select The Dan Godwin Community Center promotional materials, media and event materials.

**On-Site Signage and Recognition**

- Sponsor recognition will appear on The Dan Godwin Community Center sponsor signs. In addition, sponsor- provided signage may be displayed. Sponsors will be allowed to setup informational exhibits at events.
- Sponsors will be recognized at the Annual Membership Dinner Banquet from the podium and any sponsor representatives will be introduced.
- Sponsors will be recognized with a permanent display plaque on site.
- Sponsors will have complete access to services, the Community Center and monthly Arc newsletters.

**Terms**

- Contribution is a minimum of \$2,500 cash for the benefit of local education, recreation and advocacy programs, or towards Community Center renovations.
- Or arrange \$2,500 in contributions/in-kind donations or materials.



**The Dan Godwin Community Center  
Circle of Trust Sponsor  
\$1,500-\$2,999**

A Dan Godwin Community Center Circle of Trust Sponsor will promote full community inclusion for individuals with developmental disabilities and their families in our community.

*A gift at this level provides:*

**Corporate Advertising and Promotional Materials**

- Sponsor identification will appear in periodical print advertising for The Dan Godwin Community Center program.
- Corporate recognition on periodical The Dan Godwin Community Center promotional materials, media and event materials.

**On-Site Signage and Recognition**

- Sponsor recognition will appear on The Dan Godwin Community Center sponsor signs. In addition, sponsor- provided signage may be displayed. Sponsors will be allowed to setup informational exhibits at events.
- Sponsors will be recognized at the Annual Membership Dinner Banquet from the podium and any sponsor representatives will be introduced.
- Sponsors will be recognized with a permanent display plaque on site.
- Sponsors will have complete access to services, the Community Center and monthly Arc newsletters.

**Terms**

- Contribution is a minimum of \$1,500 cash for the benefit of local education, recreation and advocacy programs, or towards Community Center renovations.
- Or arrange \$1,500 in contributions/in-kind donations or materials.



**The Dan Godwin Community Center  
Platinum Circle Sponsor  
\$750-\$1,499**

A Dan Godwin Community Center Platinum Circle Sponsor will enable 1,200 individuals with developmental disabilities and their families to receive monthly information and educational support from the Parent Coalition newsletter.

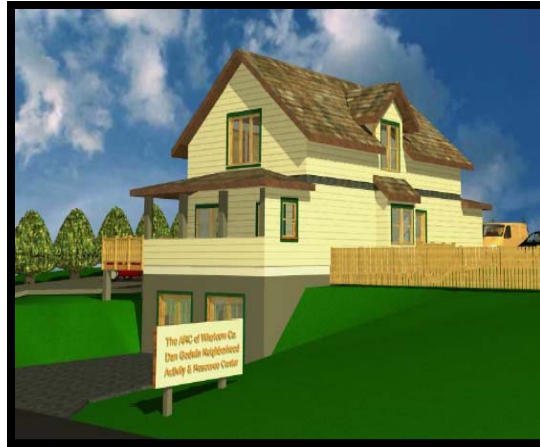
*A gift at this level provides:*

**On-Site Signage and Recognition**

- Sponsors will be recognized at the Annual Membership Dinner Banquet from the podium and any sponsor representatives will be introduced.
- Sponsors will be recognized with a permanent display plaque on site.
- Sponsors will have complete access to services, the Community Center and monthly Arc newsletters.

**Terms**

- Contribution is a minimum of \$750 cash for the benefit of local education, recreation and advocacy programs, or towards Community Center renovations.
- Or arrange \$750 in contributions/in-kind donations or materials



**The Dan Godwin Community Center  
Gold Circle Sponsor  
\$250-\$749**

A Dan Godwin Community Center Gold Circle Sponsor will further the mission of The Arc to improve the quality of life, increase the independence, and assure the full inclusion in the community of all persons with developmental disabilities while promoting the vision of The Arc to be an effective resource, a strong advocate, and a dedicated base of support for individuals with developmental disabilities and their families.

*A gift at this level provides:*

**On-Site Signage and Recognition**

- Sponsors will be recognized with a commemorative engraved brick on our Circle of Support accessible pathway at The Dan Godwin Community Center.
- Sponsors will be recognized at the Annual Membership Dinner Banquet from the podium and any sponsor representatives will be introduced.
- Sponsors will have complete access to services, the Community Center and monthly Arc newsletters.

**Terms**

- Contribution is a minimum of \$250 cash for the benefit of local education, recreation and advocacy programs, or towards Community Center renovations.
- Or arrange \$250 in contributions/in-kind donations or materials.



**The Dan Godwin Community Center  
Silver Circle Sponsor  
\$50-\$249**

A Dan Godwin Community Center Silver Circle Sponsor will improve the quality of life, increase the independence, and assure the full inclusion in the community of all persons with developmental disabilities.

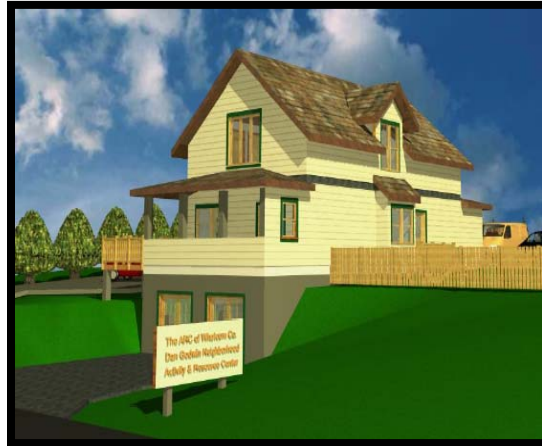
*A gift at this level provides:*

**On-Site Signage and Recognition**

- Sponsors will be recognized with a commemorative engraved brick on our Circle of Support accessible pathway at The Dan Godwin Community Center.
- Sponsors will be recognized at the Annual Membership Dinner Banquet from the podium and any sponsor representatives will be introduced.
- Sponsors will have complete access to services, the Community Center and monthly Arc newsletters.

**Terms**

- Contribution is a minimum of \$50 cash for the benefit of local education, recreation and advocacy programs, or towards Community Center renovations.
- Or arrange \$50 in contributions/in-kind donations or materials.



**The Dan Godwin Community Center  
Bronze Circle Sponsor  
\$10-\$49**

A Dan Godwin Community Center Bronze Circle Sponsor will promote the vision of The Arc to be an effective resource, a strong advocate, and a dedicated base of support for individuals with developmental disabilities and their families.

*A gift at this level provides:*

**On-Site Signage and Recognition**

- Sponsors will be recognized with a commemorative engraved brick on our Circle of Support accessible pathway at The Dan Godwin Community Center.

**Terms**

- Contribution is a minimum of \$10 cash for the benefit of local education, recreation and advocacy programs, or towards Community Center renovations.
- Or arrange \$10 in contributions/in-kind donations or materials.